

Kaymar

Fitting Instructions



OzBar

Vehicle Patrol GU1

Year

Type Wagon

Part Rear Bar

Applicable to Part Numbers

OZ1021, OZKITGU1, OZKITGU1RJCD

February 7, 2017 11:04 AM

IMPORTANT - BEFORE COMMENCING INSTALLATION

Please verify the part number corresponds with the list above.

Read through these instructions and check items in the supplied fitting kit matches the attached list.

Every effort is made to ensure instructions are as accurate as possible at the time of publishing however work should not be commenced until the document has been thoroughly read, measurements checked and all components in the package verified as complete. Kaymar has used reasonable care in preparing the information included in these documents, but makes no representations or warranties as to the completeness or accuracy of the information. Information is supplied upon the condition that the persons receiving the information will make their own determination as to its suitability for their purposes prior to use. Kaymar assumes no liability whatsoever for any damages incurred by you resulting from errors in or omissions from the information included herein. Kaymar reserves the right to make changes without further notice to any products to improve reliability, function or design.

NISSAN GU SERIES 1 OZBAR

1. Remove the Nissan bumper bar including all mounting brackets.
2. For the best final finish mask up around door hinges and under flares. Paint this area satin black. (refer photos Fig 1,2,3,4)
3. Using Loctite 454 glue rubber strips to the top of wing. (Refer Fig. 5)
4. Loosen the tow bar **only** leaving the two centre bolts in place. Remove two bolt plates from inside the chassis. These will not be reused.
5. Fit the plate with four holes to the centre of the chassis using M12 x 30 x 1.25 bolt, spring and flat washers.

NOTE: Plate with two holes should be towards the top.

This is to support the bar and must be properly in place.

Kaymar

Fitting Instructions



Fig. 1



Fig. 2



Fig. 3

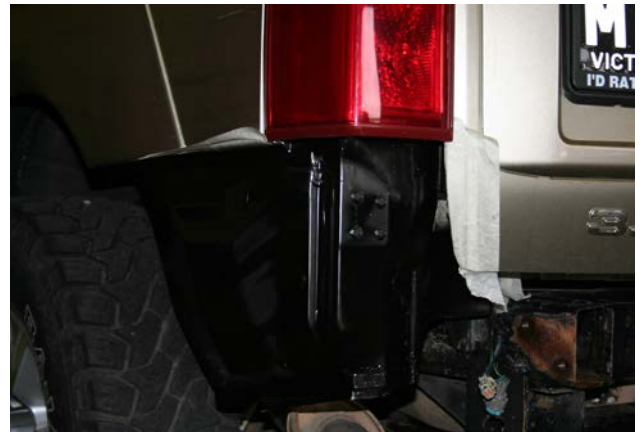


Fig. 4



Fig. 5



Fig. 6

Kaymar

Fitting Instructions

6. With the assistance of a second person.

Lift the OzBar on to the vehicle.

Locate the M14 bolts, spring and flat washers through the side plates in the bar and into the captive nuts in the chassis.



Fig. 7

7. Lift the bar up towards the body until a gap of approximately 15 - 20mm is achieved along the top side of the wing and the body.

Tighten all four bolts.

8. Fit the two bolt plates into the inside side of the chassis and drop down through the rear most hole. Fit the wing brace to the chassis using M12 x 1.75 nuts, flat and spring washers. (Refer Fig. 6)

Do not tighten

9. Fit M12 bolt on wire down through inside of chassis out through forward most hole in the wing brace. Secure using M12 flat, spring washers and M12 x 1.75 nuts. (Refer Fig. 7)

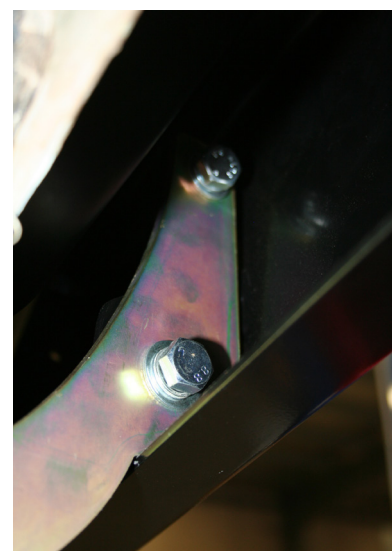


Fig. 8

10. Fit M10 x 30 x 1.5 bolt with M12 spring and flat washers through the wing brace into the bracket welded to the inside of the bar wing. Hold using M10 wizz nuts. (Refer Fig. 8)

Do not tighten

11. Fit M12 x 35 x 1.75 bolts and washers up through the wing brace in to the OzBar. Secure using M12 flat and spring washers, M12 x 1.75 nuts.

Tighten ALL bolts

12. Fit M12 x 35 x 1.75 bolt with large laser cut flat washer through the centre of the bar into the spacer plate. Secure using M12 nut, spring and flat washers.

Securely tighten



Fig. 9

13. Refit mud flaps to OzBar using M6 screws and wizz nuts.

14. Hold mud flap against top of the wing and drill out to 7mm. Secure using M6 screw and nut. (Refer Fig. 10)

Kaymar

Fitting Instructions

16. Using the original plastic mud flap infill mark down 120mm and cut off the bottom section. Refit to vehicle and mud flap using original hardware.
(Refer Fig. 11, 12)

17. Fit the tread plate using the stainless steel hex head screws supplied.

18. If carriers or jerry can holders are to be fitted please see the separate instructions enclosed.



Fig. 10



Fig. 11



Fig. 12

19. Splice wiring for the LED lights into the trailer wiring harness following the table below:

FUNCTION	TRAILER HARNESS WIRE	LED WIRE
STOP	RED	GREEN/PURPLE
TAIL	BROWN	RED
REVERSE	BLACK	GREEN/BROWN
EARTH	WHITE	BLACK
RH INDICATOR	GREEN	GREEN
LH INDICATOR	YELLOW	GREEN

NOTE: The REVERSE will need to be spliced in behind the LH TAIL LIGHT

Kaymar

Fitting Instructions

OzBar Nissan Patrol GU1

Bolt Kit

- 4 x M14 x 35 x 1.5 bolts
- 4 x M14 flat washers
- 4 x M14 spring washers
- 6 x M12 x 35 x 1.75 bolts
- 4 x M12 x 30 x 1.25 bolts
- 20 x M12 flat washers - HD
- 16 x M12 spring washers
- 2 x M12 bolt on wire M12 x 35 x 1.75
- 12 x M12 x 1.75 nuts
- 2 x M12 x 45 bolt plates
- 4 x M10 x 30 x 1.5 bolts
- 4 x M10 flat washers
- 4 x M10 spring washers
- 4 x M10 wizz nuts
- 4 x M6 x 20 roof bolts
- 4 x M6 wizz nuts
- 2 x large M12 laser cut washers
- 1 x Centre support plate

