

MAZDA BT50 BAR INSTRUCTIONS

1. Remove rear bumper and towbar if fitted.
2. If vehicle is fitted with rear park assist sensors, remove sensors and sensor harness from bumper. Taking note which hole sensor came out of. Discard black plastic backing clip.

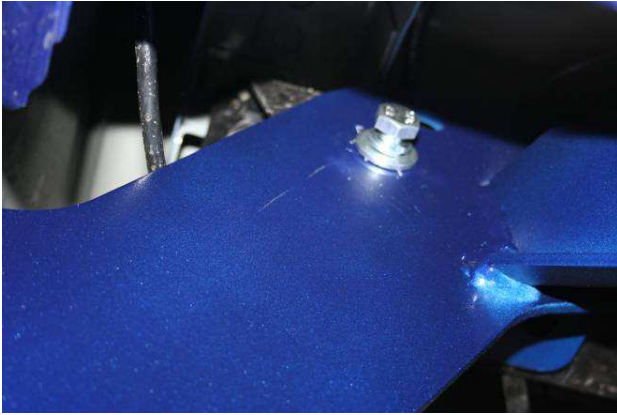


3. Run some masking tape along underside of tube on either side to protect paint work when bar is being fitted.



4. With another person lift the Kaymar bar onto vehicle being careful not to touch the paint work.

5. Fit 3 x either side, M12 x 1.75 x 35 bolt, spring and flat to captive nuts in chassis. **DO NOT TIGHTEN.**



6. Fit 1 x bolt on wire on either side in through chassis and out through retainer hole in Kaymar bar using M12 flat, spring and nut. **DO NOT TIGHTEN.**



7. Fit bolt plate into chassis down through support gusset in Kaymar bar using M12 flat, spring and nut. **DO THESE BOLTS UP FIRST.**



8. Do up remaining bolts.

9. Re-fit sensors into bar, run a bead of silicon around back of sensors.



10. IF vehicle has trailer harness. Wire in LED lights as per wiring diagram.

	Trailer Harness	LED
Left hand indicator	Yellow	Yellow
Right hand indicator	Green	Green
Stop	Red	Red
Tail	Brown	Brown
Reverse	Black	Black
Earth	White	White

11. Run a thin bead of silicon along underside of chequer plate curved edge. Place rubber strip along curved edge. Place another bead of silicon on rubber strip. Fit to bar using stainless steel hex head screws and M6 flange nuts.

12. If carriers or jerry can holder is to be fitted, see separate carrier fitting instructions.