

Kaymar

Fitting Instructions



Suitable for
Ford Everest

Year **All Models**

Type **Wagon**

Part **Rear Bar**

Applicable to Part Numbers

K4010-S, KITEV, KITEV-L-JCS, KITEV-R-JCS

See also related fitting instructions for reversing sensors, carriers and jerry can holders

Date published July 8, 2020

IMPORTANT - BEFORE COMMENCING INSTALLATION

Please verify the part number corresponds with the list above. Read through these instructions and check items in the supplied fitting kit matches the attached list.

Please Note:

For vehicles fitted with factory sensors it is important and essential to test and validate the sensors are enabled and operational prior to commencing removal from the OEM bumper and installation into the new rear bar.

Kaymar

Fitting Instructions



Suitable for Ford Everest

Removal of the Bumper

1. Remove the spare wheel from under the vehicle. (refer to the owners manual)

Remove mud flaps using a T30 Torx key and undo the four Torx screws on either side and one under the mud flap.

Remove the six plastic scrivotts from inside of the wheel arch and remove the mud flap. Place the mud flap aside for reuse.



2. Undo the screw retaining the bumper to the body inside the top of the wheel arch. Then remove the four screws from under the bumper.



Kaymar

Fitting Instructions



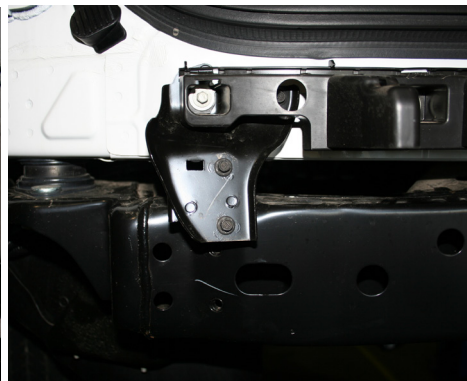
3. Unplug the fog lights from the bumper, then unplug the sensor/fog light harness from the vehicle on the left hand side behind the bumper side wing.



4. Remove the tail light blanking cover from inside edge of the light and remove three screws either side then remove the tail light assembly. NOTE: Pull the tail light toward the rear to unclip. Unplug the tail light assembly and place aside for reuse.



5. Gently unclip the bumper from the vehicle, starting at the wheel arch. Place the bumper aside for marking cut lines.
6. Remove the two metal bumper support brackets and discard. These will NOT be reused. Then remove the two metal brackets that held the bumper support brackets in position. Remove the black plastic step support and sit aside this will be reused.

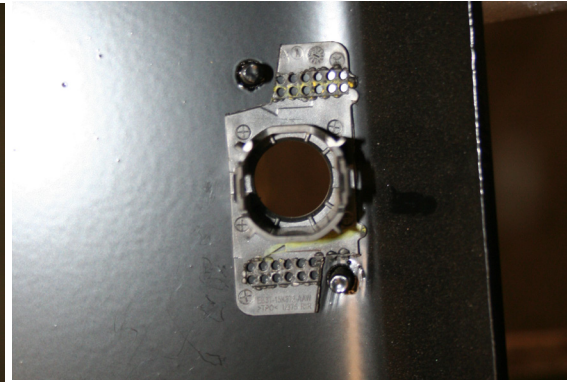
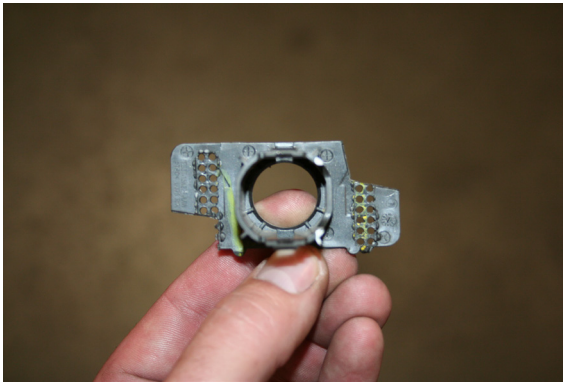


Kaymar

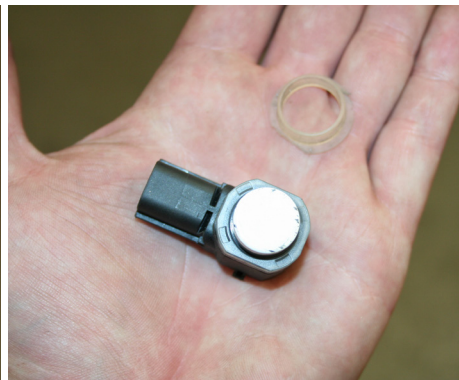
Fitting Instructions



7. With the bumper sitting on a soft non-abrasive surface remove the sensor harness and sensors from the bumper. Place aside for reuse. Using a Stanley knife or flat blade screwdriver remove the sensor housing (retainers) from the bumper.
8. Mark the sensor retainers as to which hole they came from. L - left, R- right, CL - centre left, CR - centre right.
9. Hold the sensor retainers in the appropriate location on the Kaymar bar and cut an approximately 15mm x 15mm square out of the corners corresponding with the bolts in the bar.



10. Remove and place aside the clear rubber grommets on the sensors. If not colour coding give the sensors and housings a light spray with black paint. Allow to dry then refit clear grommets to the sensors



Kaymar

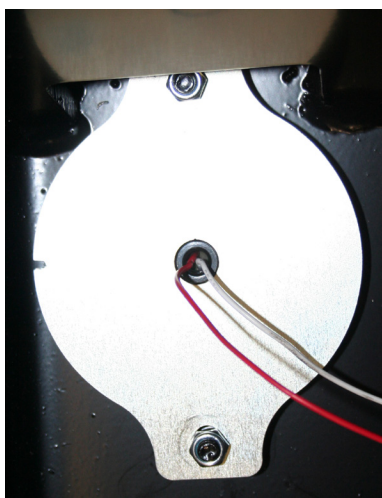
Fitting Instructions



11. With all four sensor retainers cut and painted, clamp to the bar using the clamping plates and M6 wizz nuts provided. NOTE: Make sure the retainer is centralised in the laser cut hole in the bar.



12. Fit the fog lights to the bracket supplied in the fitting kit, lining up the tab on top of the light to the indicator on the bracket then fit to the bar using M6 Nyloc nuts. DO NOT over tighten.



13. If fitting a reverse camera, knock out the centre circle in the rear bar and touch up using rust proof paint.

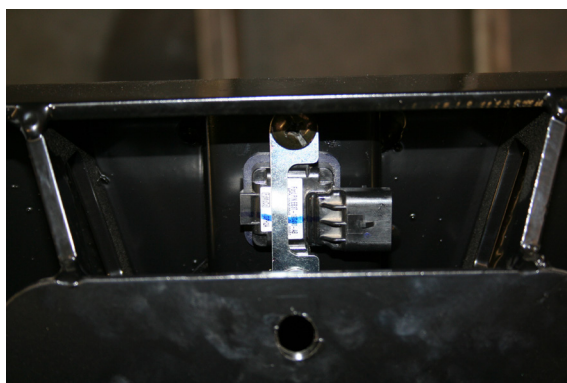


Kaymar

Fitting Instructions



14. Fit the camera to the bar making sure the plug faces towards the passenger side. Apply some thread locker to the two M6 roof screws and clamp camera to the bar using the clamping plate supplied. DO NOT over tighten.



15. Plug in the camera patch harness and cable tie out of the way for installation later.
16. Refit the sensors into the retainers then refit the sensor harness.



Marking and cutting the bumper

1. The black plastic step support removed earlier in step 6 needs to be trimmed as per our photos below. Do this along the entire length of the step support.



Kaymar

Fitting Instructions



2. Refit the step support to the vehicle using the original hardware.
3. Refit the bumper to the vehicle making sure it sits back in its original position.
4. Holding a ruler vertically against the bumper where it meets the body, mark down 175mm at the wheel arch.



5. The bumper has a horizontal styling line that runs across the back. Apply masking tape to the bottom of the radius on the styling line. Then with a felt tip pen mark down 15mm. Do this across the rear and around the corners of the bumper in approximately 200mm intervals. Using a ruler join all the marks including the mark at the wheel arch.

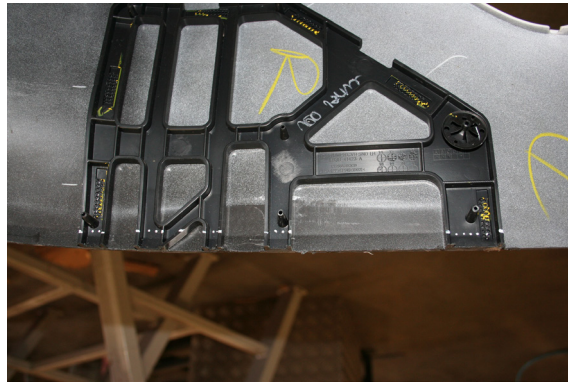


Kaymar

Fitting Instructions



6. Cut the bumper on the line using a grinder with a 1mm cutting wheel. This can be done on the vehicle. NOTE: DON'T cut through too deep as wiring is located behind the bumper wing on the left hand side.
7. On the inside of the bumper wing there is a bumper stiffening gusset. Remove the bumper and mark up 15mm on the gusset and cut only the gusset to allow for the pinch weld.



8. Clean up the cut edge using a Stanley knife. Fit the 14mm pinch weld supplied the entire length of the bumper cut, starting at a wheel arch. DO NOT refit the bumper until the bar is fitted.
9. Undo the small screw holding the mud flap support to the body. Fit the mud flap brackets supplied in the bolt kit. These are right and left handed, fit as shown in the photo below. The photo shows the driver's side.



Kaymar

Fitting Instructions

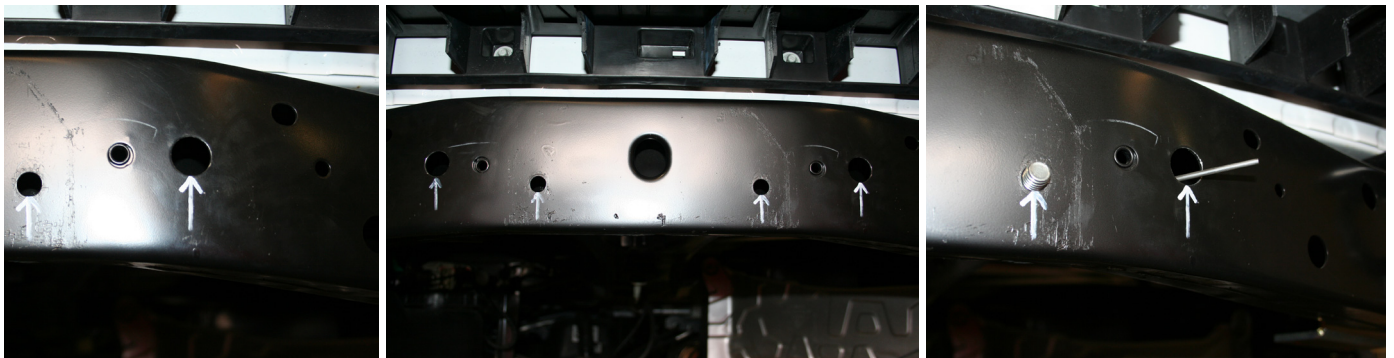


10. From underneath the vehicle use 1 x bolt on wire with 300mm wire. Bend the wire and feed through the slotted hole in the forward face of the chassis through and out the side hole. Then fit a bolt on wire with 150mm wire through the slotted hole and out through the inner hole. Fit the gold 6mm mounting plate over the two bolts on wire and secure using M12 flat and spring washers and nuts. Repeat on the other side.

NOTE: These are right and left handed, the mount should run up toward the centre of the vehicle. Photo shows the right hand side.



11. Using the remaining two bolts on wire, bend the wire and feed through the 19mm hole in the rear face of the chassis and out through the two centre holes as per the photo. NOTE: Push the bolt back into the chassis until the bar is fitted.



12. Unclip the two wiring clips from the body and let hang until after the bar is fitted.

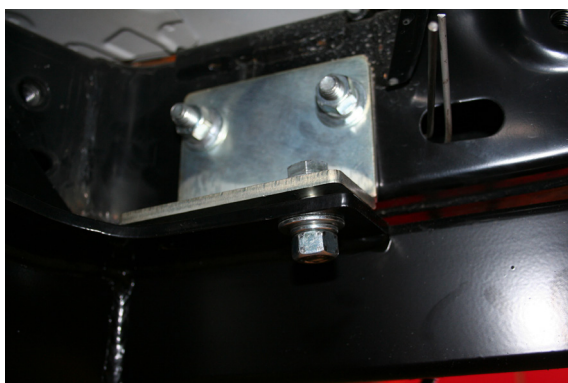


Kaymar

Fitting Instructions



13. With another person lift the Kaymar bar on to the vehicle and fit 4 x M12 x 35 x 1.75 bolt with flat washer through the top of the gold mounting bracket fitted in step 10 into the tow bar gusset and secure with M12 flat and spring washers and nut.



14. Fit 8 x (4 either side) M14 x 50 x 2 bolts with M14 flat and spring washers to the 8mm chassis arms and into the captive nuts in the chassis.



15. Feed the 2 x bolts on wire fitted into the chassis in step 11 through two holes in above the tow hitch receiver and secure using M12 flat and spring washers and nuts.



16. Tighten the 4 x M12 x 35 x 1.75 bolts in the gold mount plate first then tighten all remaining bolts

Kaymar

Fitting Instructions



17. Refit the bumper to the vehicle clipping back into the original position. Refit the tail light assembly and refit 6 x screws taken out in step 4 of bumper removal. Refit the blanking covers and refit the original screw to the bumper in the wheel arch removed in step 2.



18. Fit mud flaps back to the vehicle using the original screw in the top hole. Then use the M6 roof screws and M6 Nyloc nuts in the remaining holes. Use the original screws for the lower hole in the mud flap to the metal support.



19. i. Using the wiring harness K6327-HI, plug the two way connector into the OE wiring on the R/H side, then plug in the R/H tail light assembly and refit to the vehicle.



- ii. Run the harness down to the chassis cross member, this will be hidden behind the bumper. Run the harness across the top of the chassis cross member to the L/H side. Plug in the two way connector as per the R/H side and refit the tail light to the vehicle.
- iii. Plug the LED lights into the harness
- iv. Leave the extra wiring out of the way for fitment later in the camera/reverse power instructions.

Kaymar

Fitting Instructions



Cut the plugs off the original fog light harness and wire to the Kaymar fog lights following the table below:

Harness	LED fog light
Black/white (negative)	White
Brown/green (positive)	Red

Camera Patch Installation

1. Open the tail gate and remove the jack from inside the rear floor compartment. Remove the floor compartment by undoing the 5 x nuts using a 10mm socket. Remove floor compartment.



2. Lift to unclip the tail gate floor panel. Remove and place aside.



3. On the right hand side undo the plastic tie down hook on the lower trim, then using a T50 Torx key undo the third row seat belt. Unclip the lower trim enough to run wiring. Remove the upper trim.

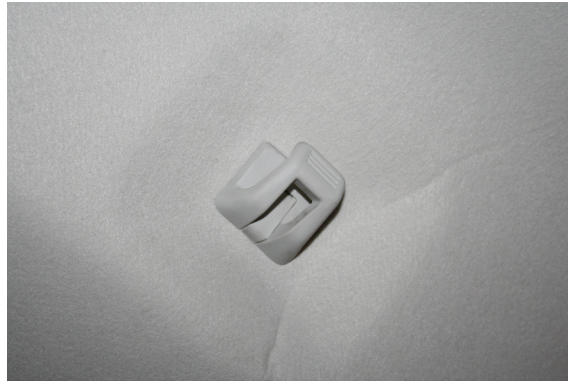


Kaymar

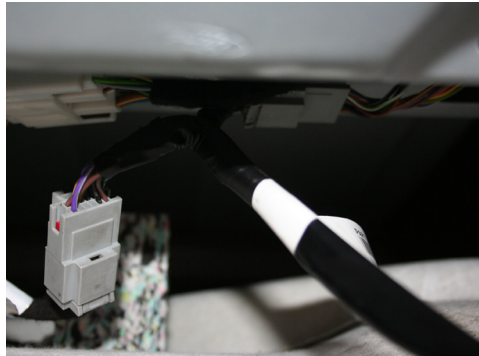
Fitting Instructions



4. Undo the hook in the roof just behind the second row seats on the right hand side using a T20 Torx key. This is to prevent creasing the roof lining when accessing the camera plug.



5. Pull down the roof lining on the right hand side to expose the camera wiring. Unplug the grey plug in the roof and plug in the two way connectors of the Kaymar harness.



6. Feed the wiring down through the upper and lower trim to the floor. Remove the right hand grommet from the floor.



Kaymar

Fitting Instructions



7. Feed the camera patch harness fitted to the bar in step 12 of removal and preparation up through the floor, fitting the rubber grommet on the harness into the floor. Plug in the harness to the patch harness.
8. Reassemble all trim.
9. If fitting carriers or jerry can holders see separate fitting instructions.

Bump Stop Fitting

1. If fitting carriers or jerry can holders close the carrier and hold the bump stop against the horizontal bottom rail of the carrier directly below the vertical upright, making sure there is at least a 10mm gap between it and the tail gate.



Kaymar

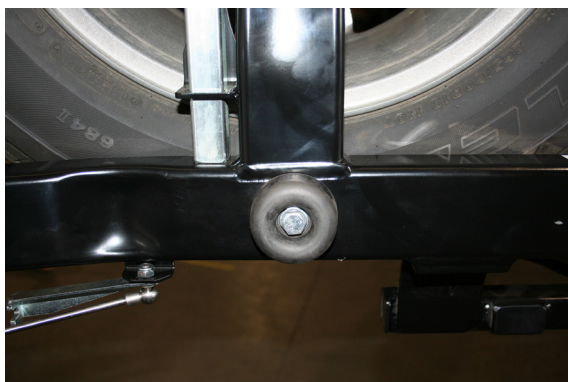
Fitting Instructions



2. Mark the centre with a 10mm drill bit. Drill through the bottom rail using a pilot bit then drill out using an 8.5mm bit. Tap the hole using an M10 a 1.5 gun tap.



3. Bolt the bump stop to the carrier using M10 bolt, spring and flat washers.



4. If fitting a jerry can holder, hold the bump stop against the horizontal bottom rail and slide along until there is a gap of at least 10mm, mark and drill as per step 2 above.



Kaymar

Fitting Instructions



BK4010 Bolt Kit for Everest

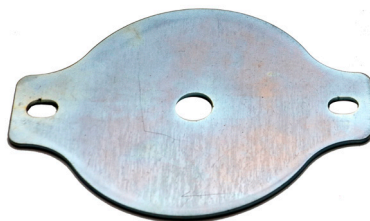
- 8 M14 X 50 X 2 bolts
- 8 M14 flat washers
- 8 M14 Spring washers
- 4 M12 x 35 x 1.75 bolts
- 14 M12 flat washers H/D
- 10 M12 spring washers
- 4 M12 x 35 x 1.75 bolt on wire (150mm wire)
- 2 M12 x 35 x 1.75 bolt on wire (300mm wire)
- 12 M6 x 20 black roof bolts
- 14 M6 Nyloc nuts
- 8 M5 wizz nuts
- 1 2.8 metre, 14mm pinch weld
- 12 Male terminals
- 12 Female terminals
- 4 Everest sensor clamps
- 1 L/H mud flap bracket
- 1 R/H mud flap bracket
- 2 Fog light backing plates
- 2 LED fog lights
- 1 L/H chassis mount plate
- 1 R/H chassis mount plate
- 1 2 metre seven-core wire



K742L_K742R Chassis Mount Plates



Fog Lights



K748 Fog Light Backing Plate



K750 Everest Sensor Clamp



K746L_K746R Mud Flap Brackets