

Kaymar

Fitting Instructions

Suitable for
Toyota HiLux 2015+

Year

Type **SR5**

Part **Rear Bar**

Applicable to Part Numbers

K3890, KITHIL-15, KITHIL-15-L-JCD, KITHIL-15-R-JCD

Date published June 26, 2018

IMPORTANT - BEFORE COMMENCING INSTALLATION

Please verify the part number corresponds with the list above.

Read through these instructions and check items in the supplied fitting kit matches the attached list.

Every effort is made to ensure instructions are as accurate as possible at the time of publishing however work should not be commenced until the document has been thoroughly read, measurements checked and all components in the package verified as complete. Kaymar has used reasonable care in preparing the information included in these documents, but makes no representations or warranties as to the completeness or accuracy of the information. Information is supplied upon the condition that the persons receiving the information will make their own determination as to its suitability for their purposes prior to use. Kaymar assumes no liability whatsoever for any damages incurred by you resulting from errors in or omissions from the information included herein. Kaymar reserves the right to make changes without further notice to any products to improve reliability, function or design.

Suitable for HiLux 2015

1. NOTE: Check the tub is central on the chassis
2. Remove the original bumper and tow bar if fitted
3. With the help of another person lift the Kaymar bar on to the vehicle being careful not to touch the body
4. Fit 4 x M12 x 35 x 1.25 bolt, flat and spring washers to either side of the chassis. Do not tighten (fig.1)
5. Slide the 3mm spacer between bar and chassis at the two rear most holes (fig.2)



Kaymar

Fitting Instructions

6. Align the small plate with the captive nuts to the rear two holes in the chassis and secure using M12 x 35 x 1.75 bolt, flat and spring washers. Repeat on the other side. (fig.3)



(fig.3)

7. Slide the larger nut plate on wire down through the chassis to the forward holes in the chassis. Secure with M12 x 35 x 1.25 bolt, flat and spring washers.
8. Tighten all bolts starting with bottom bolts. Then tighten all side bolts.
9. Splice LED lights into the trailer harness using 7 core cable supplied. Follow the table below.

Function	Harness	LED
STOP	RED	RED
TAIL	BROWN	BROWN
REVERSE	BLACK	BLACK
L/H	YELLOW	YELLOW
R/H	GREEN	GREEN
EARTH	WHITE	WHITE

10. Fit chequer plate using a thin bead of silicon along the under side of the chequer plate curved edge, place the rubber strip along the curved edge.
- Place another thin bead of silicon to the rubber strip. Fit to bar using stainless steel hex head screws.
11. If fitting carriers or jerry can holders see carrier fitting instructions.

Kaymar

Fitting Instructions

12. If camera is to be relocated , open the tailgate and remove the coverplate. (fig.4)



(fig.4)

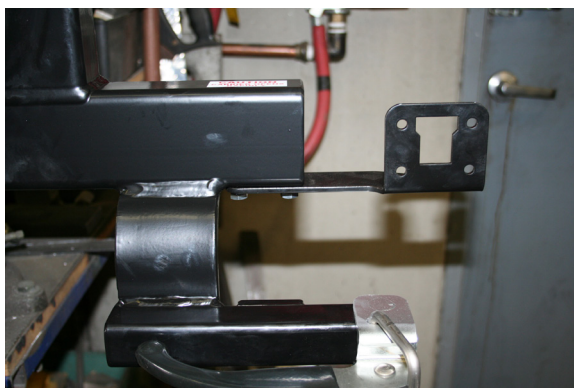
13. Unplug the harness from the camera and tailgate brake light

14. Unclip the harness and pull wire back to under the tailgate and unplug from vehicle harness. (fig.5)



(fig.5)

15. Plug in the Kaymar extension harness and run short lead back up into the tailgate and plug back into the brake light.
16. Feed the camera harness up through the gap in the chequer plate.
17. Attach black camera bracket to carrier using bolts supplied. (fig.6)



(fig.6)

Kaymar

Fitting Instructions

18. Attach cable tie mounts to the bottom of the carrier arm. Cable tie wiring harness to the mounts. (fig.7)



(fig.7)

19. Fit the camera to the bracket using M6 pan head screws and wizz nuts.
21. Plug the camera harness into the camera.
22. Check all LED lights and the camera work correctly.
23. Fit 25mm gromet into the tailgate where the camera was removed.
24. Refit the tailgate cover plate using the original hardware

Kaymar

Fitting Instructions

BK3890 HILUX 15+ REAR BAR

QUANTITY	DESCRIPTION
2	BACKING PLATE - 2 X 12 X 1.75 NUTS WELDED ON
2	NUTS ON PLATE M12 X 1.25 X 2 FINE THREAD ON 300 MM WIRE
12	BOLT M12 X 35 X 1.25 FINE THREAD
4	BOLT M12 X 35 X 1.75
16	WASHER FLAT M12 X 30 HD
16	WASHER SPRING M12
2	SPACER 3MM
1	WIRE TRAILER 7 CORE 1000 MM LENGTH
10	WIRE CONNECTOR FEMALE
10	WIRE CONNECTOR MALE



backing_plate_2x_12x1.75_nuts_
welded_on



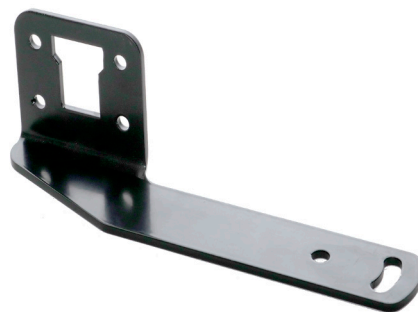
nuts_on_plate_M12x1.25x2_fine_thread_
on_300mm_wire



spacer_3mm

Camera Kit

- 1 x Camera bracket
- 1 x Rubber grommet RG-CBG7
- 2 x M8 x 20 bolts
- 2 x M8 flat washers
- 2 x M8 spring washers
- 2 x M6 pan head screws
- 2 x M6 wizz nuts



camera_bracket_K6107