

# Kaymar

## Fitting Instructions



Vehicle **Mitsubishi  
MQ Triton**

Year **All Models**

Type **Dual Cab Ute**

Part **Rear Bar**

### Applicable to Part Numbers

K3820, KITRMQ, KITRMQ-L-JCD, KITRMQ-R-JCD

See also related fitting instructions for reversing sensors, carriers and jerry can holders

Date published April 4, 2019

### IMPORTANT - BEFORE COMMENCING INSTALLATION

Please verify the part number corresponds with the list above. Read through these instructions and check items in the supplied fitting kit matches the attached list.

**IMPORTANT: If you are fitting carriers with this bar FIT CARRIERS FIRST**

#### MITSUBISHI TRITON MQ

1. Remove bumper and towbar if fitted.
2. With the assistance of another person lift the Kaymar bar on to the vehicle being careful not to touch the body.
3. Fit M12 x 1.75 x 35mm bolt and flat washer through the two rear most holes in the bar on either side and secure with M12 flat and spring washers and nut. DO NOT TIGHTEN.
4. Slide the plate with two bolts welded to it inside the chassis and drop down through the bar and secure using M12 flat and spring washers and nuts. Repeat on the opposite side.



# Kaymar

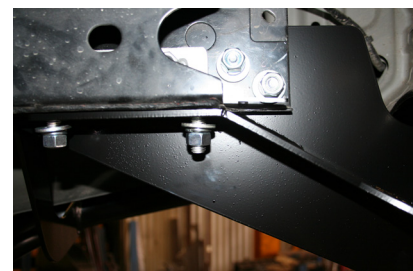
## Fitting Instructions



5. Slide the plate with the two captive nuts into the chassis and line up with the two centre holes in the bar. Fit 2 x M12 x 1.75 x 35 bolt, spring and flat washers. Repeat on the opposite side. Fit 2 x bolt on wire down through the chassis and out the forward most holes in the bar and secure using M12 flat and spring washers and nuts. (Repeat on the opposite side)



6. Tighten all bolts, starting with the four vertical bolts.



7. Splice wiring into the trailer harness for LED lights using the table below.

Function	Harness	LED
STOP	RED	RED
TAIL	BROWN	BROWN
REVERSE	BLACK	BLACK
L/H INDICATOR	YELLOW	YELLOW
R/H INDICATOR	GREEN	GREEN
EARTH	WHITE	WHITE

8. Apply a thin bead of silicon to the underside of the tread plate. Lay the plastic strip on the tread plate, then apply another bead of silicon to the plastic strip. Screw the tread plate to the bar using M6 hex head screws.
9. If spare wheel carriers or jerry can holder are to be fitted see separate fitting instructions.



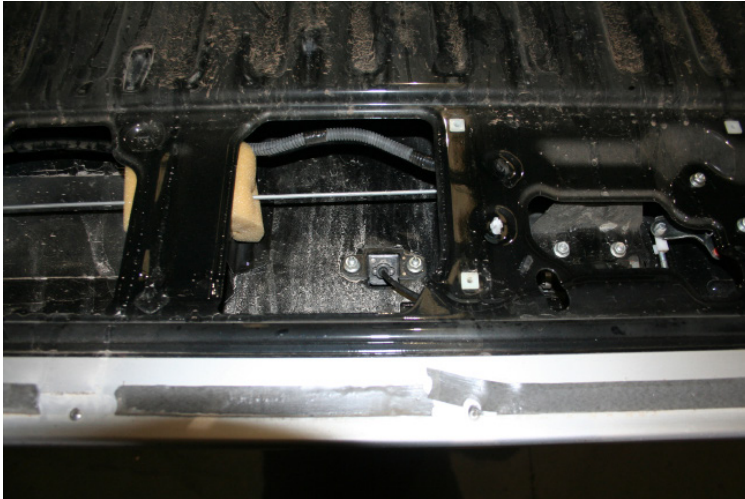
# Kaymar

## Fitting Instructions

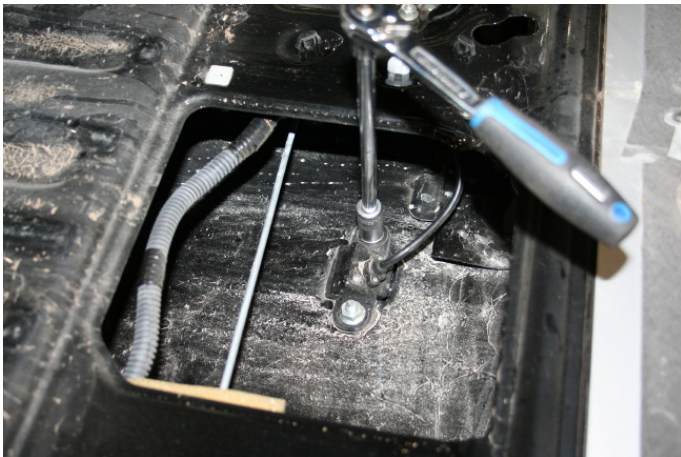


### Camera Relocation

1. Remove the rear panel on the tailgate to access the reversing camera.



2. Using a 10mm socket undo the two bolts holding the camera into the tailgate. Then unclip the harness. (NOTE: Power for the brake light will have to be extended. Cut the power and earth wires for the brake light approximately 100mm down from the light, just before the clip. Splice in the two-core wire supplied. Remove the camera harness from the tailgate to underneath the vehicle then run the two-core wire through the tailgate to underneath the vehicle.)



3. Splice the two-core wire into the trailer harness (Power/positive to RED, Negative to WHITE)
4. Attach the camera to the centre bracket in the Kaymar bar using stainless steel screws and spring washers supplied.. Plug in the camera and cable tie any excessive harness away from any sharp or moving parts.
5. Fit the grommet supplied to the plastic camera housing then reassemble the tailgate.



# Kaymar

## Fitting Instructions



### Bolt Kits for Triton MQ

- 8 M12 X 35 x 1.75
- 20 M12 HD Washers
- 16 M12 Spring Washers
- 12 M12 x 1.75 Nuts
- 2 Nut Plates (M12 x 1.75)
- 2 Bolt Plates (M12 x 45 x 1.75)
- 4 Bolt on wire
- 1 1.5 metre 7 core wire
- 10 Male terminals
- 10 Female terminals



### Camera Relocation

- 1 22mm grommet
- 2 M6 stainless steel screws
- 2 M6 spring washers
- 1 1 metre two-core wire