

Kaymar

Fitting Instructions



Vehicle **Defender UTE**
Year
Type
Part **STD Carrier**

Applicable to Part Numbers

K1710

Date published February 28, 2017

IMPORTANT - BEFORE COMMENCING INSTALLATION

Please verify the part number corresponds with the list above.

Read through these instructions and check items in the supplied fitting kit matches the attached list.

Every effort is made to ensure instructions are as accurate as possible at the time of publishing however work should not be commenced until the document has been thoroughly read, measurements checked and all components in the package verified as complete. Kaymar has used reasonable care in preparing the information included in these documents, but makes no representations or warranties as to the completeness or accuracy of the information. Information is supplied upon the condition that the persons receiving the information will make their own determination as to its suitability for their purposes prior to use. Kaymar assumes no liability whatsoever for any damages incurred by you resulting from errors in or omissions from the information included herein. Kaymar reserves the right to make changes without further notice to any products to improve reliability, function or design.

FITTING INSTRUCTIONS – LANDROVER DEFENDER UTE

WHEEL CARRIER TO STANDARD BAR

*****Please check tub is square on the chassis and re-align if necessary before fitting Kaymar bar*****

1. Remove split pin and washer from tailgate hinge.

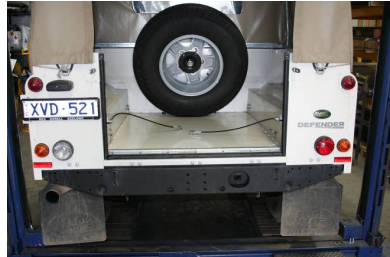


Kaymar

Fitting Instructions



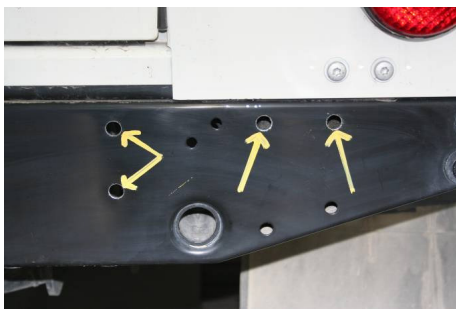
2. Unclip the two tailgate cables and remove tailgate.



3. Remove two hinge brackets from chassis. These are not needed again,
4. On some vehicles, there maybe a section of weld on the under side of the chassis cross member. These will need to be ground flat.
5. Remove two bolts from above Land Rover step. Remove step.



6. Some holes in chassis need to be enlarged. See photos below and drill to 11mm.



7. You will need to cut two slots just above chassis. Touch up with paint.

***NOTE: THESE SLOTS ARE FOR SUPPORT BRACE AND MUST BE DONE.**



Kaymar

Fitting Instructions



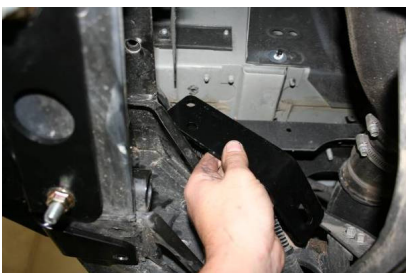
8. Fit two bolt plate from inside chassis, so bolts come through holes you drilled earlier.
9. Fit black corner brace with shaft to chassis using M10 flat, spring and M10 nyloc nuts. Make sure corner bracket sits hard up against bottom of chassis and TIGHTEN.
10. Using two holes in corner bracket as a guide, drill two holes in bottom of chassis to 11mm. Feed plate with nuts welded into chassis use M10 x 30 flat, spring



11. The second support brace needs to be drilled to ½ inch.



12. The top brace, must be fitted. This slides between the body and the top of the chassis. Fit 12mm bolt through the hole in chassis gusset, underneath the body. Fit two M10 bolts with washers, through the two matching holes in corner bracket. Using M10 flat, spring and M10 nyloc nuts.



13. Fit M12 bolt through the bottom brace. Secure using M12 flat, spring and M12 nut.

TIGHTEN ALL BOLTS.

14. Fit black catch bracket to left and side of chassis using two original bolts, taken out earlier. Fit bolt plate from inside chassis, using M10 flat, spring and M10 nyloc nut. Leave loose until carrier, is fitted.



Kaymar

Fitting Instructions



15. Refit Land Rover step using silver 8mm packer on right hand side, use original bolts.
Re-fit tailgate into new hinge brackets. Use original split pin and washers, then secure tailgate cables



16. If carrier to be fitted – do following:-
Fit the wheel carrier onto the shaft and slide the bearing into the top of the wheel carrier pivot housing.
MAKE SURE THE BEARING AND THE SHAFT ARE GREASED FIRST.

Fit the large flat washer over the shaft then screw the retaining nut down onto the bearing and tighten.
DO NOT OVER TIGHTEN.

Fit retaining pin. Fit cover cap over the top of the housing. **(FILL WITH GREASE FIRST)**

Once the wheel carrier has been fitted to the shaft, place the lock catch hook into the loop of the handle and position the lock catch and the carrier against the vehicle as shown in picture below.



17. Move the lock catch along the handle rail until you achieve the 35mm gap as shown in above picture.
With the lock catch held firmly against the vehicle with the carrier, mark the position of the bottom two holes of the lock catch.
Separate the carrier from the lock catch and swing out of the way.
Position the lock catch back onto the vehicle over the two holes first marked – mark the top two holes.
18. Centre punch these holes and drill out to 11mm
19. Fit the lock catch with the 10mm bolts (washers and nuts if needed). Line up the handle rail of the wheel carrier in the centre of the lock catch as shown in photo below then tighten the bolts.
The hook of the lock catch can be levered in or out to give a positive tension when locking the handle closed.



Kaymar

Fitting Instructions



20. The wheel mounting plate on top of the wheel carrier is adjustable. When the wheel is done up with the three wheel nuts, open the carrier and stand behind it, so as you can slide the wheel back far enough to allow it to sit firmly against the main arm of the carrier. Tighten the two 16mm diameter bolts on the wheel carrier top slide, then bend the tabs on the lock washers onto a flat on the head of each bolt.

The clear protective strip included in the fitting kit should be placed on the bar behind the latch.

Kaymar

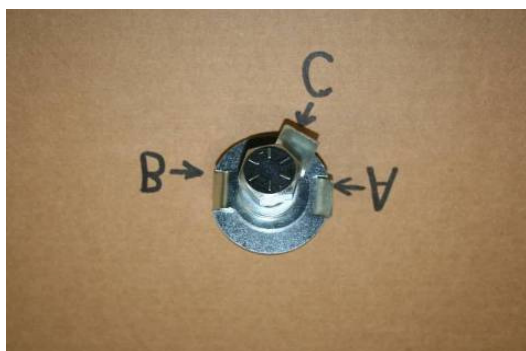
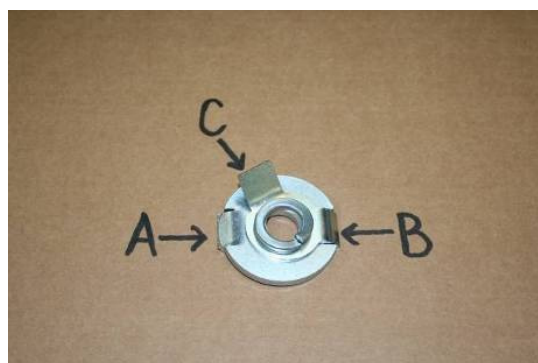
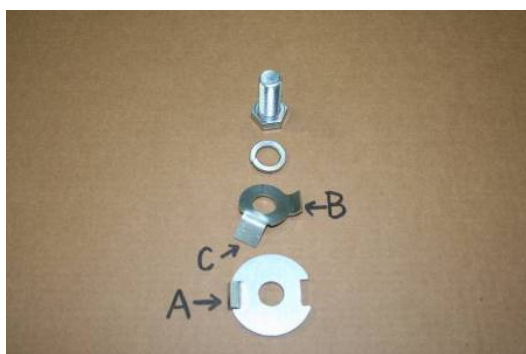
Fitting Instructions



LOCK TAB WASHER

1. Fit the top slide (wheel holder) into the wheel carrier.
2. Fit spring washer and small lock tab washer onto 16mm bolts.
3. Fit large 5mm thick washer onto bolt with lug (A) facing away from the head of the bolt.
4. Apply a thin film of grease to the bolts.
5. Screw 16mm bolt through the slots in the wheel carrier housing into the top slide. Make sure that the lug (A) fits into the slot first. Make sure you fit both bolts.
6. Fit the wheel and wheel lock plate.
7. Open the wheel carrier and stand behind it. PULL THE TYRE INTO THE CARRIER FRAME SO THAT THE TYRE SITS HARD AGAINST THE FRAME.
8. Tighten the two 16mm bolt to at least 140nm, make sure tab (B) fits into the cut-out in the 5mm washer.
9. Continue turning the bolt unit one flat on the hexagon is aligned with tab (C) of the lock tab washer.
10. Flatten tab (C) onto a flat of the hexagon on the bolt head. Do the same with both bolts. Make sure the whole tab sits flat on the bolt head.

THIS MUST BE DONE



Kaymar

Fitting Instructions



BK1710 DEFENDER WAGON STANDARD CARRIER UTE

QUANTITY	DESCRIPTION
2	BOLT M12 X 35 X 1.75
8	BOLT M10 X 25 X 1.5
1	BOLT M10 X 30 X 1.5
2	BOLT M8 X 30 X 1.25
4	WASHER FLAT M12 X 30 HD
2	WASHER SPRING M12
17	WASHER FLAT M10 X 30 HD
7	WASHER SPRING M10
2	WASHER FLAT M8 X 17
2	WASHER SPRING M8
2	NUT M12 X 1.75
8	NUT NYLOC M10 X 1.5
3	SPACER 8MM FOR 10MM BOLTS THROUGH PLASTIC BAR
1	PIVOT BRACE BRACKET
2	BOLT PLATE - OFFSET - 2 M10 X 25 X 1.5
1	BOLT PLATE - CONCAVE - 2 M10 X 25 X 1.5 - ON 300MM WIRE
1	BACKING PLATE 3 MM NUTS WELDED ON 10MM X 2 ON 300MM WIRE L&E
1	CATCH RHS
1	DUST CAP FOR CARRIERS
1	BEARING SMALL SILVER FOR STANDARD CARRIER
1	WASHER FLAT - BEARING FOR PIVOT
1	NUT CASTLEATED FOR CARRIER PIVOT
1	SPLIT PIN FOR CARRIER PIVOT
1	REFLECTOR



bolt_plate_concave_2x_M10x25x1.5_on_300mm_wire



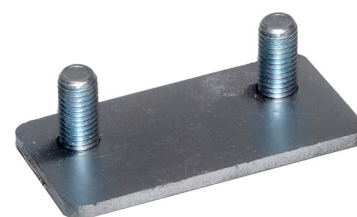
backing_plate_3mm_nuts_welded_on_10mm_x2_on_300mm_wire



spacer_8mm_for_10mm_bolts_through_plastic_bar



pivot_brace_bracket_1710_ute

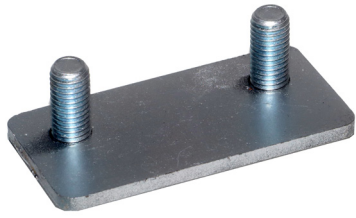


bolt_plate_offset_2x_M10x25x1.5



catch_plate_defender

BK1710 DEFENDER WAGON STANDARD CARRIER UTE



bolt_plate_offset_2x_M10x25x1.5



bolt_plate_concave_2x_M10x25x1.5_on_300mm_wire



catch_plate_defender



*backing_plate_3mm_nuts_welded_on_10mm_x2_
on_300mm_wire*



*spacer_8mm_for_10mm_
bolts_through_plastic_bar*

pivot_brace_bracket_1710_ute

